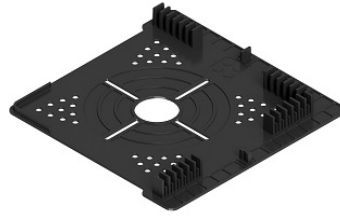


Plate for gluing perimeter tiles



Function	<p>EdgePlate has been designed for gluing porcelain stoneware tiles and risers along the perimeter and corners of outdoor raised flooring systems with top-adjustable pedestals. It ensures stability, precise installation, and a clean, elegant finish.</p> <p>EdgePlates are installed in pairs: one positioned beneath the base of the pedestal and one above the support's head. The system uses a mechanical (non-chemical) anchoring method, as the adhesive penetrates and spreads through the top holes and side pins of the EdgePlates, which are specifically designed for this purpose. The system does not interfere with the top-access height adjustment of the supports, ensuring flawless installation even in complex situations.</p> <p>Compatible with any tile format, the system is intended for applications requiring a minimum riser height of 25 mm and a tile thickness of 20 mm. It includes 2 mm or 4 mm spacer tabs for accurate and uniform joint spacing. Note: Unlike the rest of the flooring surface, once glued, perimeter tiles and risers are not inspectable.</p>		
Compatibility	Lunar Support and BalancePro with QuickOn heads.		
Range	-		
Performance	<p>The material used to produce the EdgePlate offers good resistance to acid and alkaline solutions, as well as to atmospheric agents such as harsh weather conditions, air exposure and UV rays.</p> <p>Fire reaction classification: E(fl).</p> <p>The mechanical properties remain unchanged over time.</p>		
Operating temperature	-40°C; +75°C		
Included accessories:	-	Recycled product	Yes
Optional accessories:	-	Recyclable product	Yes
		Material	PP-T20%

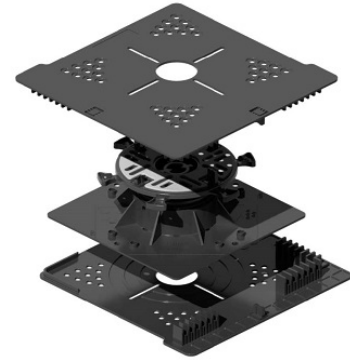
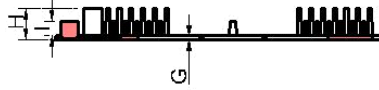
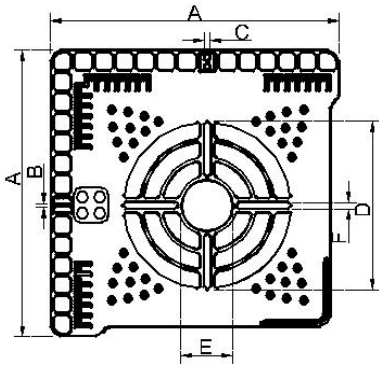
Additional information

In applications requiring a riser height of 25 mm, only one EdgePlate is used, positioned on top of the support's head.

If not otherwise indicated, all measurements are expressed in millimetres.

All dimensions indicated are average values typical of the product and they are not specific of a single batch. All information contained in this document is purely indicative and it is based on the knowledge of Impertek at the date of publication. It is responsibility of the buyer to judge if the product is suitable for the expected purpose.

Plate for gluing perimeter tiles



Line Item

1 240-935-200-005

Description

Perimeter bonding plate
EdgePlate EP-00

A	B	C	D	E	F	G	H	I
223,0	2,0	4,0	130,0	46,0	5,0	2,5	21,5	10,0

If not otherwise indicated, all measurements are expressed in millimetres.

All dimensions indicated are average values typical of the product and they are not specific of a single batch. All information contained in this document is purely indicative and it is based on the knowledge of Impertek at the date of publication. It is responsibility of the buyer to judge if the product is suitable for the expected purpose.